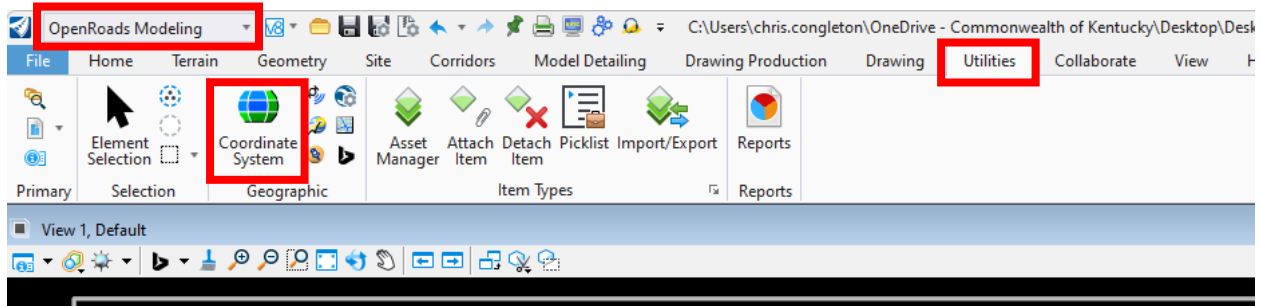


Selecting a Geographic Coordinate System

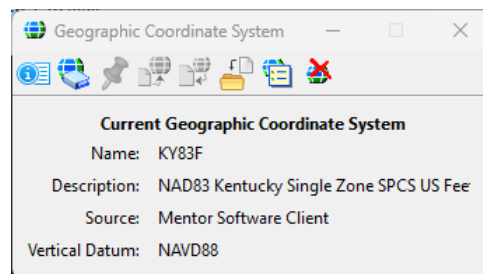
This workflow will show you how to select or change your Geographic Coordinate System to Ky Single Zone.

While in the Utilities Tab of the OpenRoads Modeling Workflow select Coordinate System from the Geographic area of the ribbon.

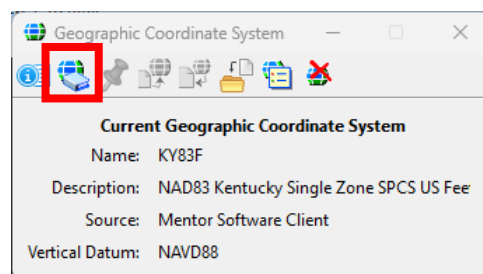


You could also search for Coordinate in the search bar and click on the Geographic Coordinate System in the search list.

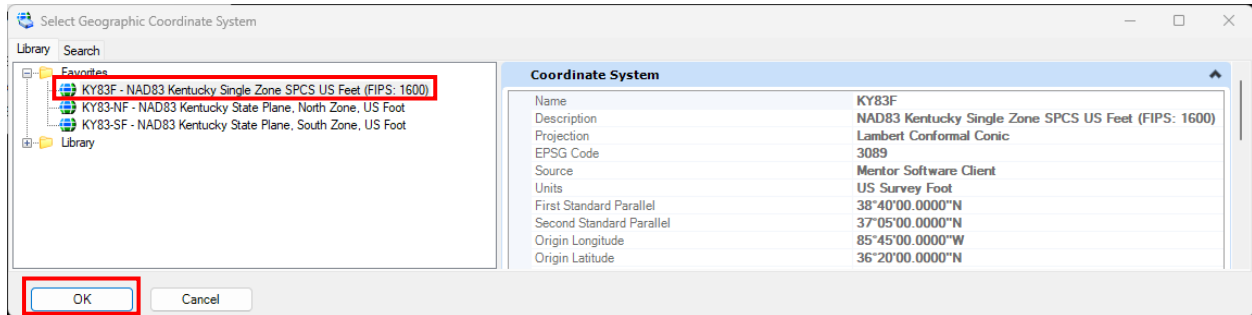
The Geographic Coordinate System window will open. If your Coordinate System is not listed as shown below you will need to change your Geographic Coordinate System. It should be noted that if it is not showing up as below you may be using an incorrect seed file when you create a new drawing.:



To change your coordinate system to Kentucky Single Zone you will want to select the “from Library” Button as shown below:

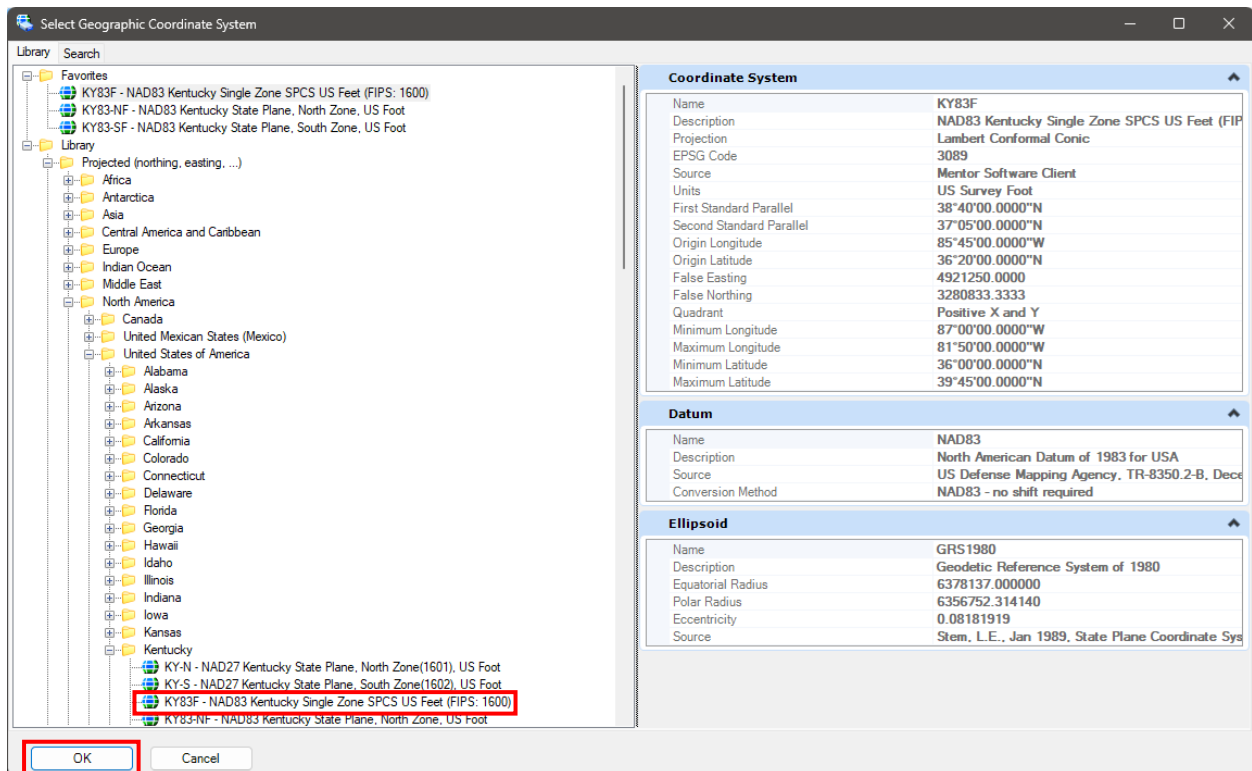


Once selected, the Select Geographic Coordinate System window will open. You may have the KY83F-NAD83 Kentucky Single Zone SPCS US Feet selection available in the favorites folder of the library as shown below:



If the selection highlighted above is in your favorites folder you may select it and click OK and your Coordinate System will be in Kentucky Single Zone.

If it is not shown in the favorites folder you will have to open the library to the Ky Single Zone along the folder tree using the path of Library>Projected>NorthAmerica>United States of America>Kentucky as shown below:



Click on the selection shown above and click OK. Your drawing should now be in correct Geographic Coordinate System and should match the window shown in the beginning of this workflow.